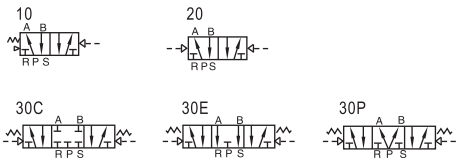


Air valve(5/2 way, 5/3 way)

4A400 Series



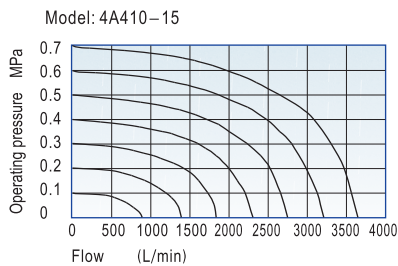
Symbol



Product feature

1. Structure in sliding column mode: good tightness and sensitive reaction.
2. Three position air valves have three kinds of central function for your choice.
3. Double air control valves have memory function.
4. Internal hole adopts special processing technology which has little attrition friction, low start pressure and long service life.
5. No need to add oil for lubrication.
6. Integrate with the manifold to save installation space.

Flow chart



Specification

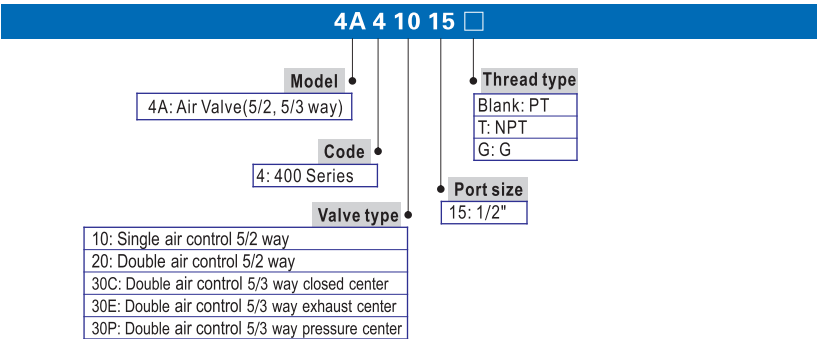
| Model | 4A410-15 | 4A420-15 | 4A430C-15 | 4A430E-15 | 4A430P-15 |
|--------------------|--|----------|-------------------------------|-----------|-----------|
| Fluid | Air(to be filtered by 40 μ m filter element) | | | | |
| Acting | Exterior control | | | | |
| Port size ① | In=Out=Exhaust=1/2" | | | | |
| Orifice size | 50.0mm ² (Cv=2.79) | | 30.0mm ² (Cv=1.68) | | |
| Valve type | 5 port 2 position | | 5 port 3 position | | |
| Operating pressure | 0.15~0.8MPa(21~114psi) | | | | |
| Proof pressure | 1.5MPa(215psi) | | | | |
| Temperature °C | -20~70 | | | | |
| Material of body | Aluminum alloy | | | | |
| Lubrication ② | Not required | | | | |
| Max. frequency ③ | 3 cycle/sec | | | | |
| Weight (g) | 555 | 685 | | | 735 |

① PT thread, NPT thread and G thread are available.

② Once lubricated air is used, continue with same medium to optimise valve life span. Lubricants like ISO VG32 or equivalent are recommended.

③ The maximum actuation frequency of no-load state.

Ordering code



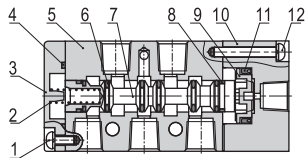
Please refer to 62 for manifold specification and the order way.

4A400

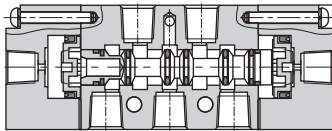
Air valve(5/2 way, 5/3 way)

4A400 Series

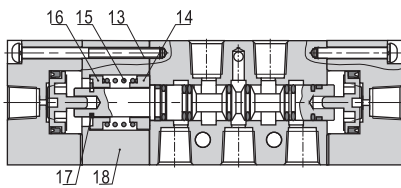
Inner structure



4A410



4A420

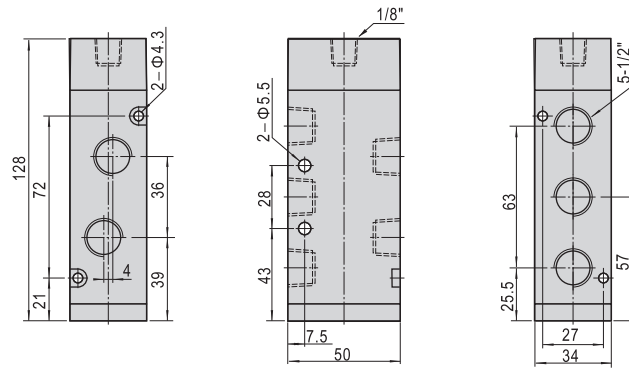


4A430C

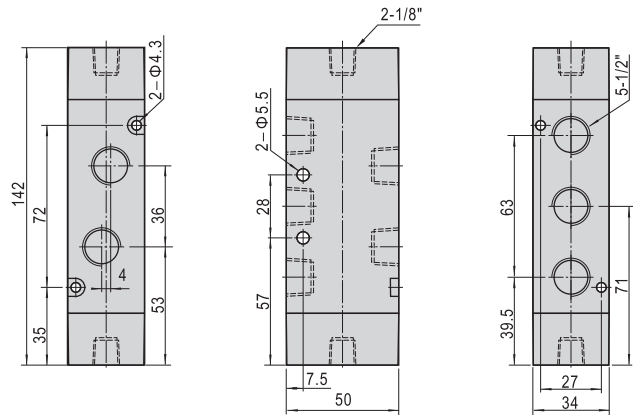
| No. | Item | No. | Item | No. | Item |
|-----|---------------------|-----|------------|-----|---------------|
| 1 | Screw | 7 | Spool | 13 | Screw |
| 2 | Spring | 8 | Wear ring | 14 | Spring holder |
| 3 | Bottom cover | 9 | Piston | 15 | Return Spring |
| 4 | Bottom cover gasket | 10 | Pilot body | 16 | Spring holder |
| 5 | Body | 11 | O-ring | 17 | E Clip |
| 6 | O-ring | 12 | Screw | 18 | Side cover |

Dimension

4A410



4A420



4A430

